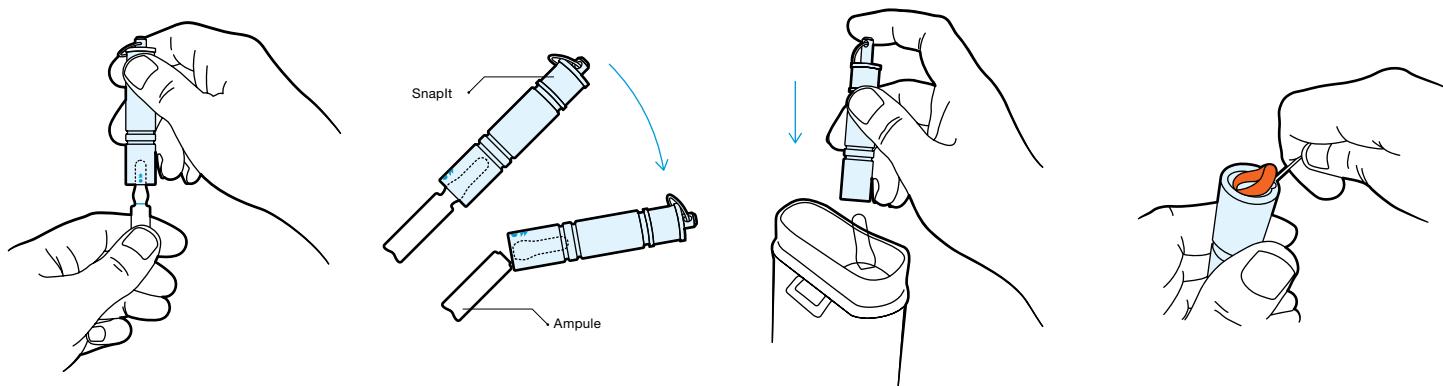


# SnapIt™ Multi-Use Ampoule Opener Instructions



## 1. Insert

Gently insert the entire ampoule lid into the SnapIt device until you reach the scored marcation on the ampoule. The ampoule lid becomes locked in at the neck.

## 2. Snap It

While gripping the SnapIt device with one hand and the bottom of the ampoule in the other, with minimal effort push the device down and away from your person. The ampoule lid should remain held in the SnapIt device.

## 3. Eject

Carefully aim over a sharps bin and eject the ampoule lid by pushing down on the rod.

## 4. Clean

Clean your SnapIt regularly. Remove O-ring as shown to disassemble the parts and clean with water or hospital grade cleaner. Do this in a clean dish to avoid loss of parts. Dry completely then re-assemble.

## Specification

Compatible ampoule sizes:		1-2 mL, 5-10 mL, 10-15 mL	
Unit length:	3.15" (80 mm)	Unit width:	0.512" (13 mm)
Weight:	0.388 oz (11 g)	GMDN code:	10098
Material:	Plastic (body), Silicon (O-ring), Stainless steel (keyring and spring)		

## Note

If the ampoule lid shatters, tap the SnapIt over a sharps bin to remove excess glass shards then rinse under running water before disassembling.